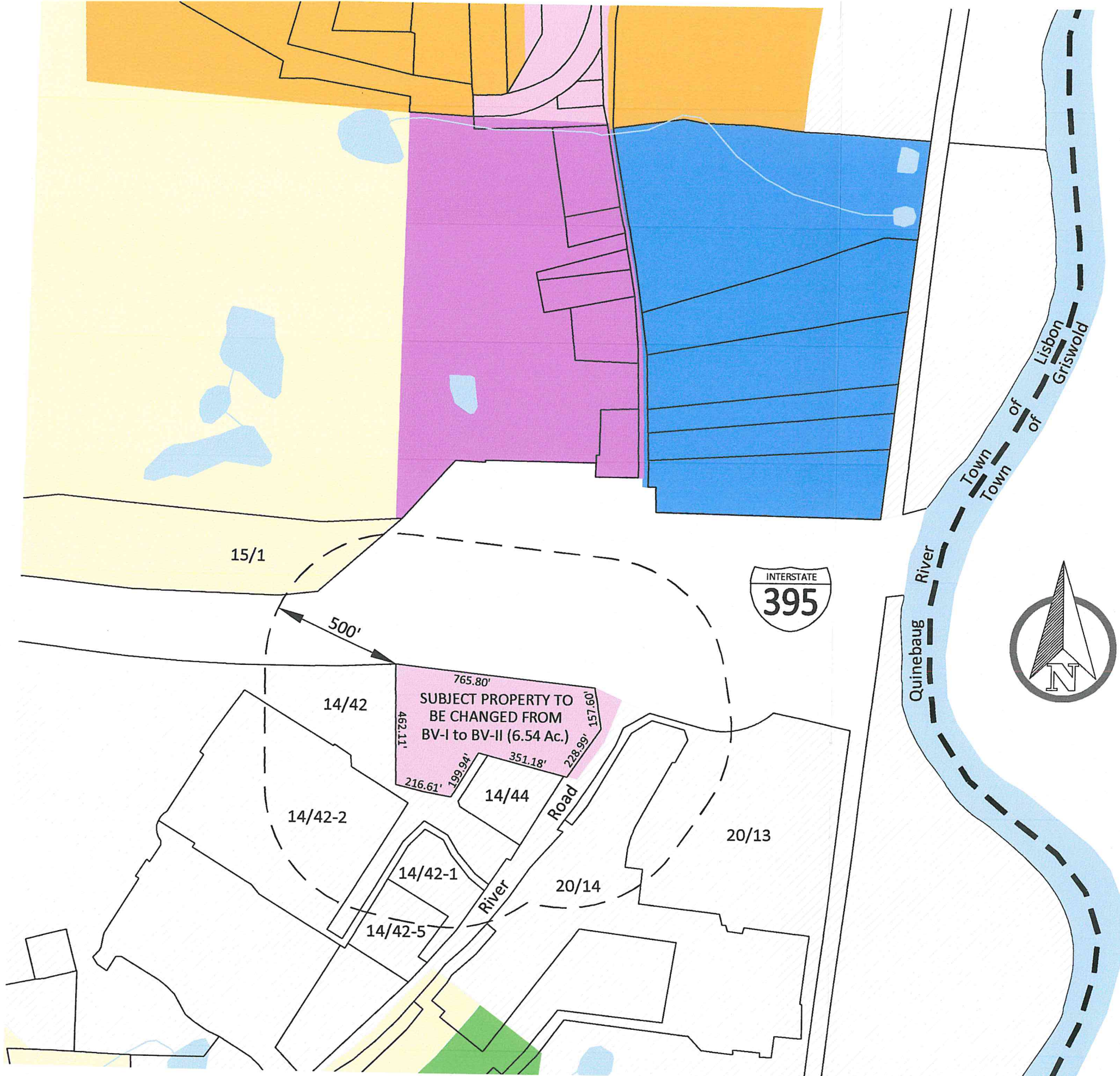


C:\MIL 3D PROJECTS\2018\18-2609-1 CROWLEY RIVER ROAD MAP AMENDMENT\DWG\DESIGN\18-2609-1 CROWLEY ZONING MAP AMENDMENT.DWG



ABUTTERS WITHIN 500'

15/1 (0 River Rd.)
Lisbon River Road, LLC
426 Water Street
Canterbury, CT 06331

20/13 (142 River Rd.)
Home Depot USA, Inc.
PO Box 105842
Atlanta, GA 30348-5842

20/14 (160 River Rd.)
Lisbon Landing, LLC
33 Boylston St., Suite 3000
Chestnut Hill, MA 02467

14/42-5 (175 River Rd.)
Aldi, Inc.
C/O Ryan Tax Compliance Services, LLC
PO Box 460049, Dept. 501
Houston, TX 77056

14/41-1 (161 River Rd.)
Aldi, Inc.
C/O Ryan Tax Compliance Services, LLC
PO Box 460049, Dept. 501
Houston, TX 77056

14/44 (151 River Rd.)
Jenny B Realty, LLC
PO Box 802206
Dallas, TX 75380

14/42 (153 River Rd.)
Lisbon Investors, LLC
1765 Merriman Road
Akron, OH 44313

14/42-2 (155 River Rd.)
Lisbon Investors, LLC
1765 Merriman Road
Akron, OH 44313

RECEIVED

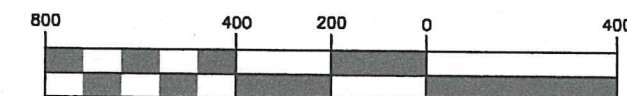
OCT 28 2020

TOWN CLERKS OFFICE
TOWN OF LISBON

ZONING DISTRICTS

- R-80: RURAL RESIDENTIAL
- R-60: LOW DENSITY RESIDENTIAL
- R-40: MOD. DENSITY RESIDENTIAL
- BV-I: VILLAGE BUSINESS I
- BV-II: VILLAGE BUSINESS II
- BV-IV: VILLAGE BUSINESS IV
- IP-I: INDUSTRIAL PARK

GRAPHIC SCALE



(IN FEET)
1 inch = 400 ft

**Map to Accompany Application
for Zoning Map Amendment**
Prepared for
143 River Road LLC

SCALE: 1" = 400'

DATE: October 20

JOB I.D. NO. 18-260

Revisions

SHEET NO

1

1