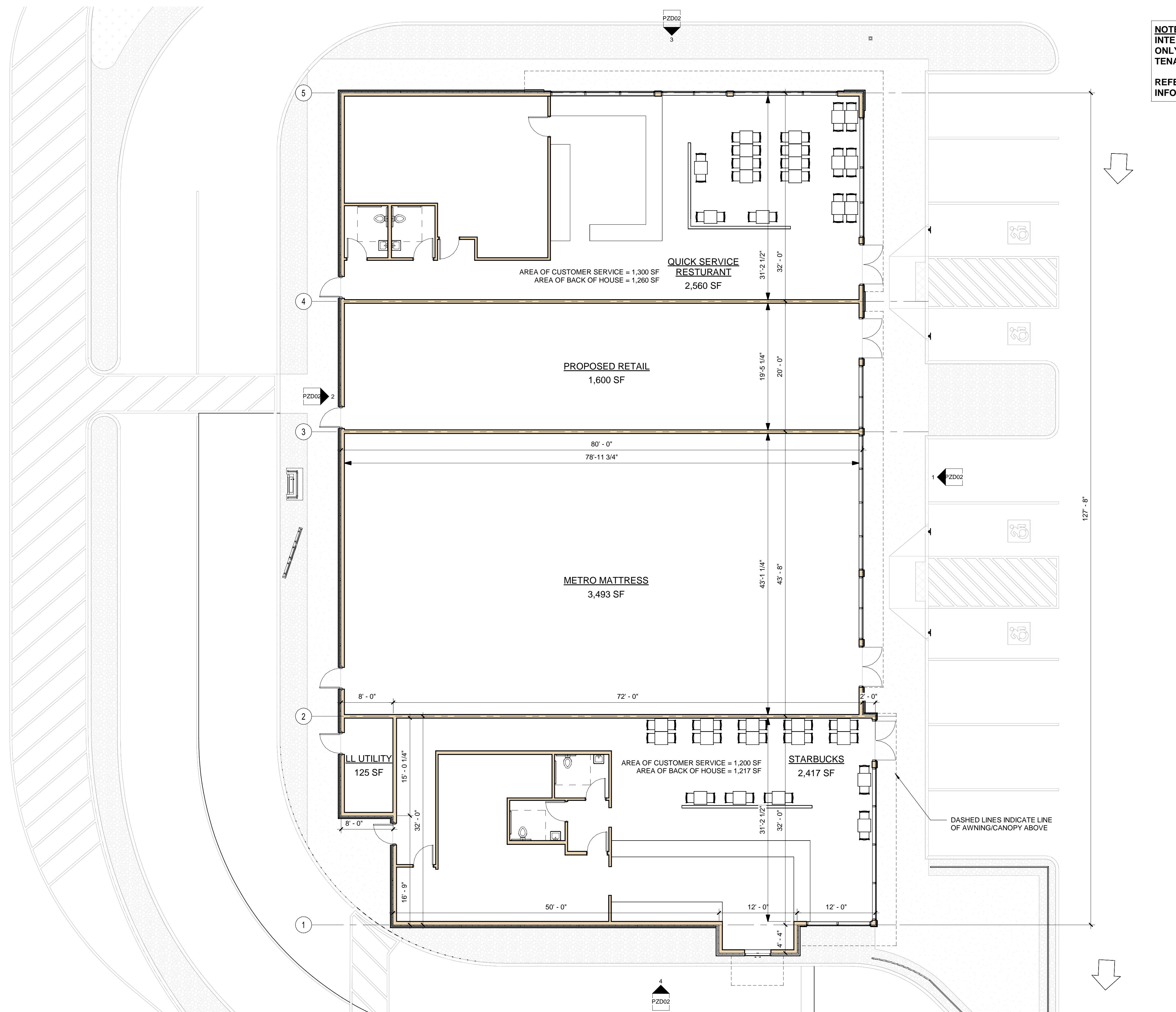
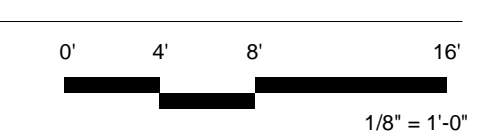


NOTE FOR REVIEWER:
 INTERIOR TENANT LAYOUTS FOR REPRESENTATION ONLY. FINAL LAYOUT TO BE DETERMINED BY FUTURE TENANT
 REFER TO SITE PLAN ON CIVIL DRAWINGS FOR MORE INFORMATION



1 LEASABLE AREA PLAN
 1/8" = 1'-0"



LISBON RETAIL BUILDING
 143 RIVER ROAD, LISBON, CT 06351
 PROPOSED PLAN | 12.19.2022



DRAWING NO.
PZD01



EXTERIOR FINISHES



STONE WATERTABLE:
CULTURED STONE - COUNTRY LEDGESTONE - FINISH: SKYLINE



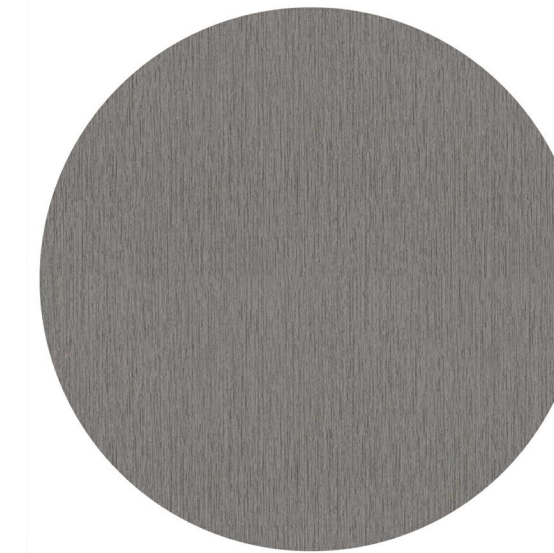
STOREFRONT:
KAWNEER ALUMINUM STOREFRONT - FINISH: BLACK



VERTICAL PANEL SIDING:
TRESPA - PURA - HIGH PRESSURE LAMINATE PANEL - FINISH: AGED ASH



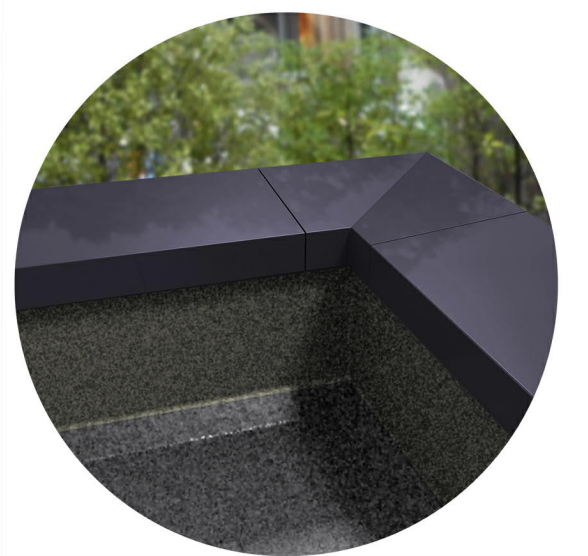
EIFS:
DRYVIT - EIFS - FINISH: REPOSE GRAY



ANGLED PANEL:
MAC - METAL BLOCK - GALVANIZED STEEL SIDING - FINISH: BRUSHED ZINC

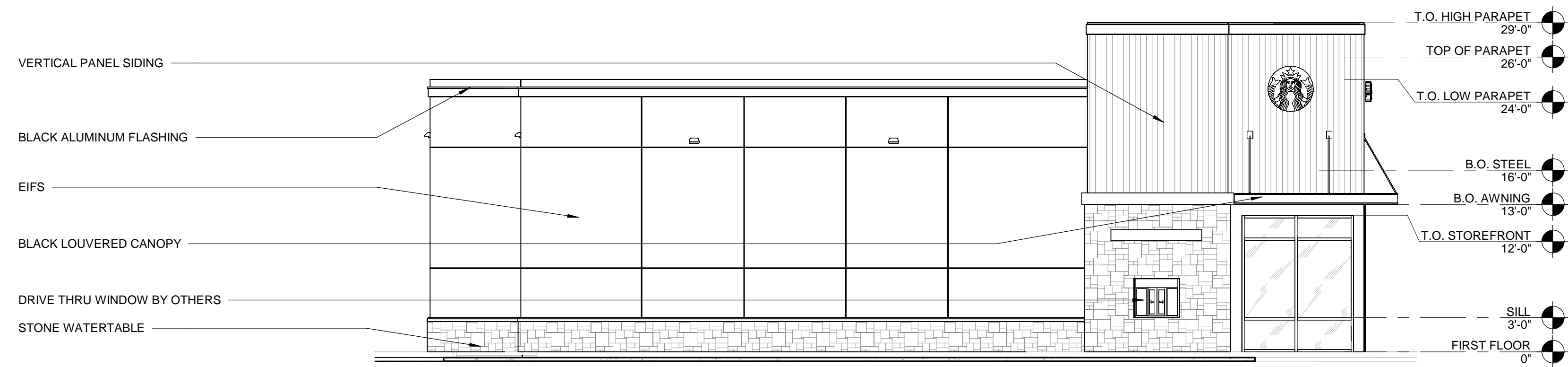


LOUVERED CANOPY:
MAPES - SUPERSHADE CANOPY - FINISH: BLACK

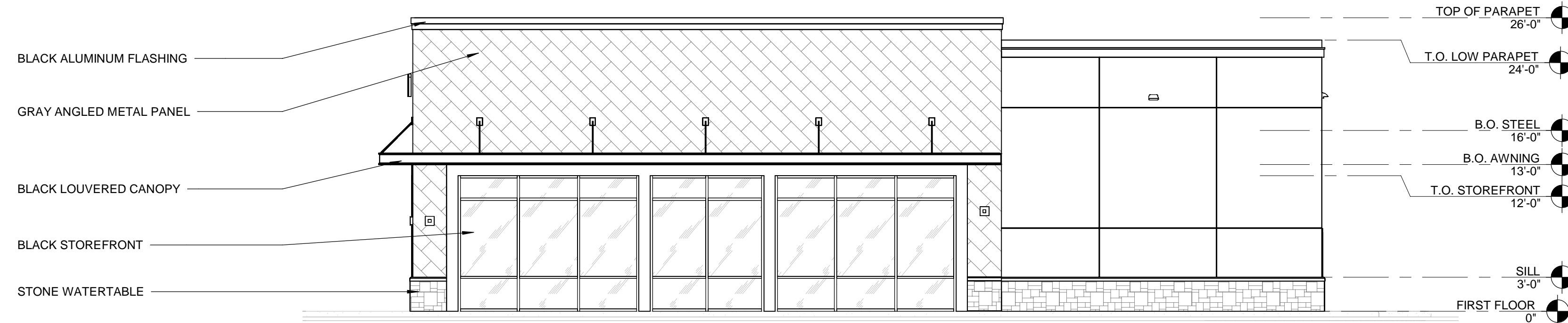


ALUMINUM FLASHING:
ALUMINUM FLASHING - FINISH: BLACK

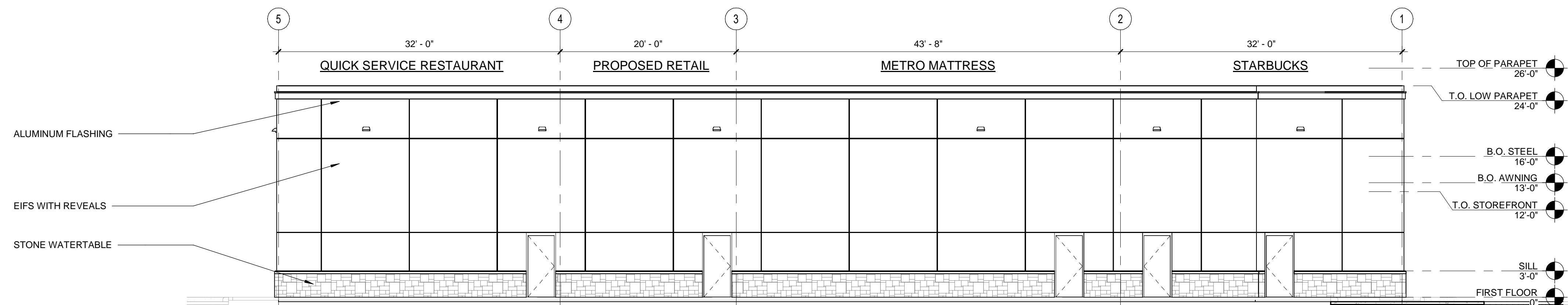
NOTE FOR REVIEWER:
ALL SIGNAGE SHOWN FOR REPRESENTATIONAL PURPOSES ONLY, FINAL SIGNAGE TO BE PROVIDED BY TENANT AND TO CONFORM TO THE TOWN OF LISBON ZONING REGULATIONS



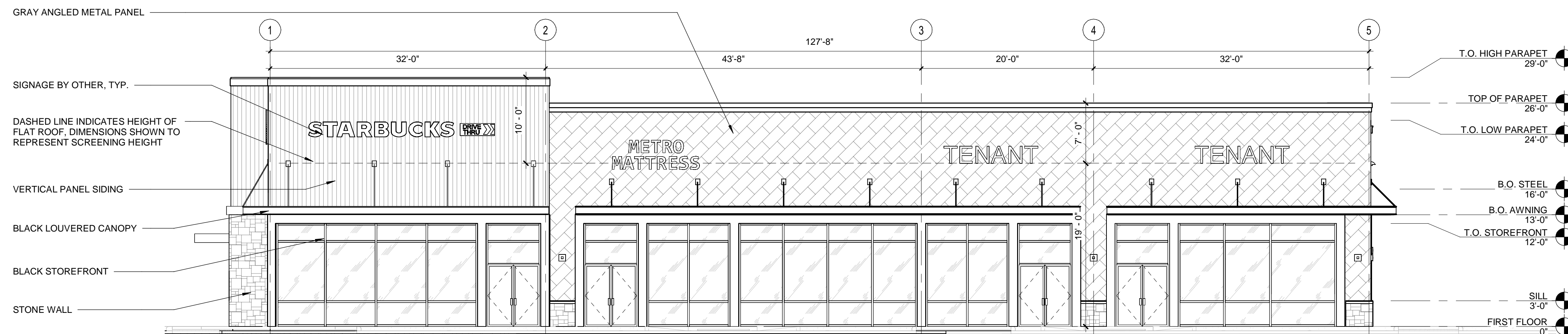
4 LEFT ELEVATION
1/8" = 1'-0"



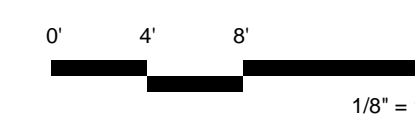
3 RIGHT ELEVATION
1/8" = 1'-0"



2 REAR ELEVATION
1/8" = 1'-0"



1 FRONT ELEVATION
1/8" = 1'-0"

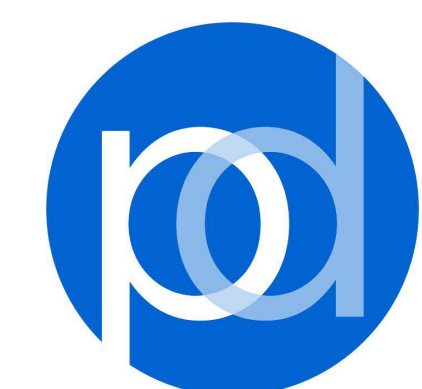


LISBON RETAIL BUILDING
143 RIVER ROAD, LISBON, CT 06351
PROPOSED ELEVATIONS | 12.19.2022



DRAWING NO.

PZD02



PHASE ZERO
DESIGN
architects | interior designers



LISBON RETAIL BUILDING
143 RIVER ROAD, LISBON, CT 06351
RENDERING | 12.19.2022



DRAWING NO.

PZD03



PHASE ZERO
DESIGN
architects | interior designers



LISBON RETAIL BUILDING
143 RIVER ROAD, LISBON, CT 06351
RENDERING | 12.19.2022



DRAWING NO.

PZD04



PHASE ZERO
DESIGN
architects | interior designers



LISBON RETAIL BUILDING
143 RIVER ROAD, LISBON, CT 06351
RENDERING | 12.19.2022



DRAWING NO.

PZD05



PHASE ZERO
DESIGN
architects | interior designers