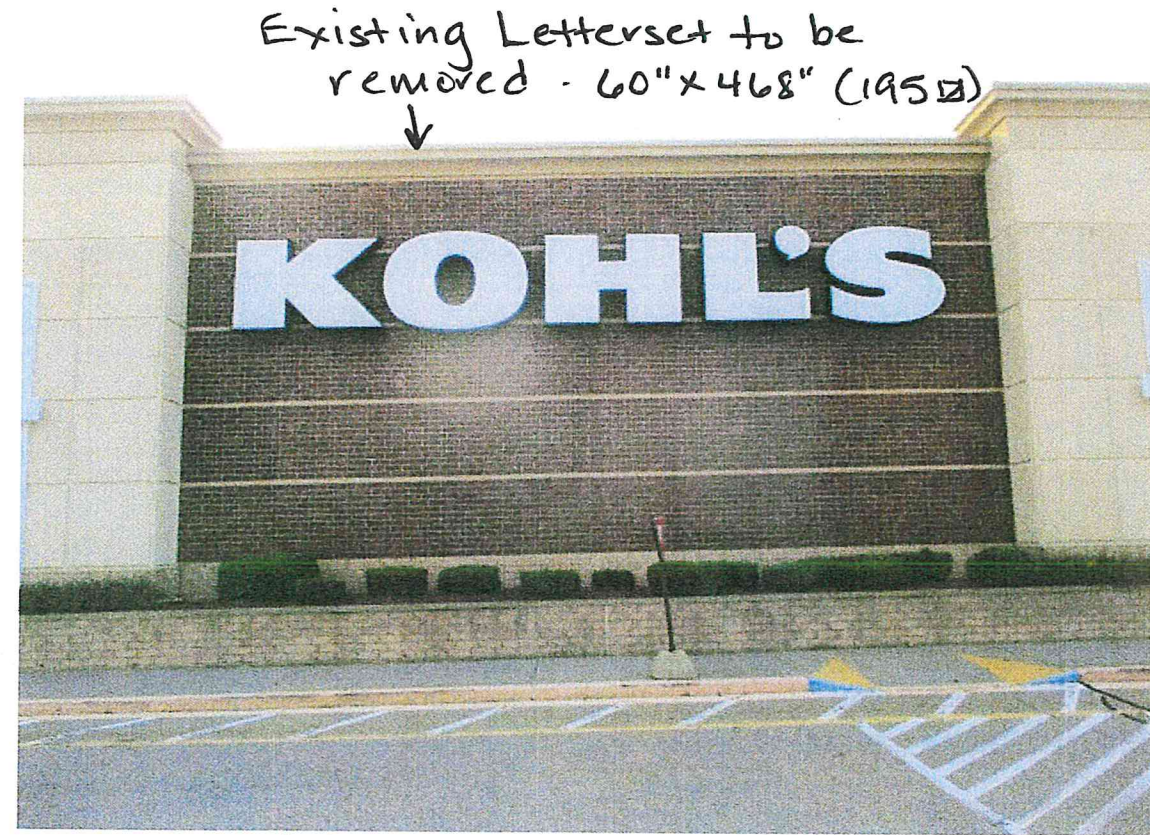




RECEIVED
5 pages
JUL 1 2022
@ 10:05am
TOWN CLERKS OFFICE
TOWN OF LISBON
Laurel Wash

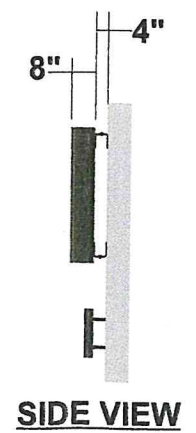
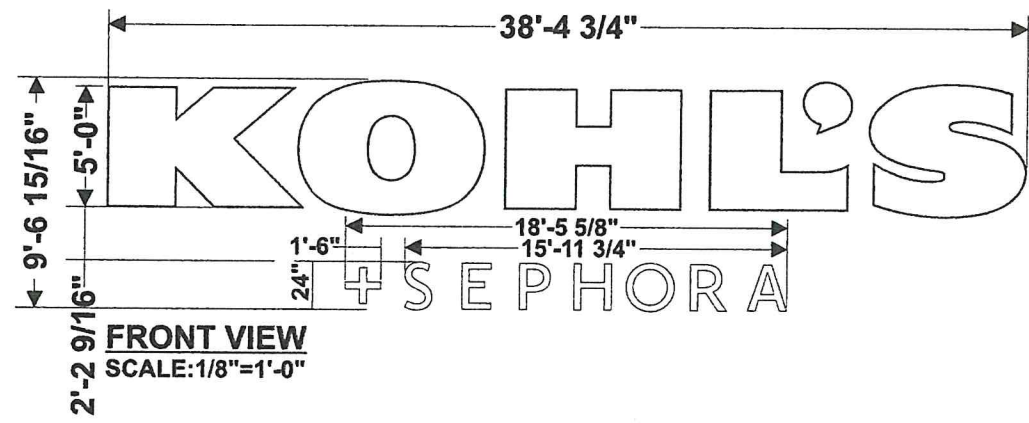


EXISTING Front lit neon letters



PROPOSED Front lit LED letters

→ 5' x 38'-4 3/4" (192 sq ft)
→ 2' x 18'-5 5/8" (37 sq ft)
TOTAL = 229 sq ft

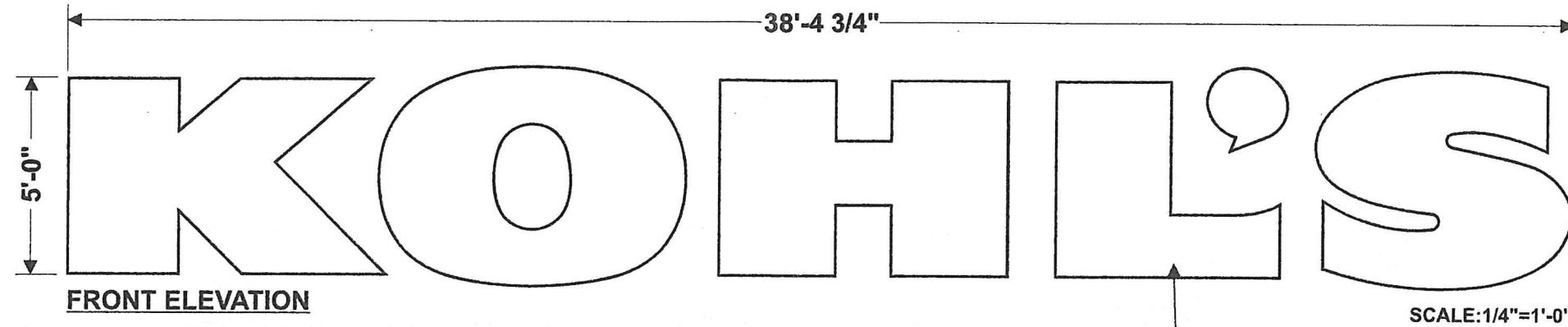


E01 Existing 60" Kohl's
Remove existing Kohl's sign. Patch holes, and paint to like new condition.
Notes: Kohl's to have existing shrubbery/trees removed by others prior to sign install.

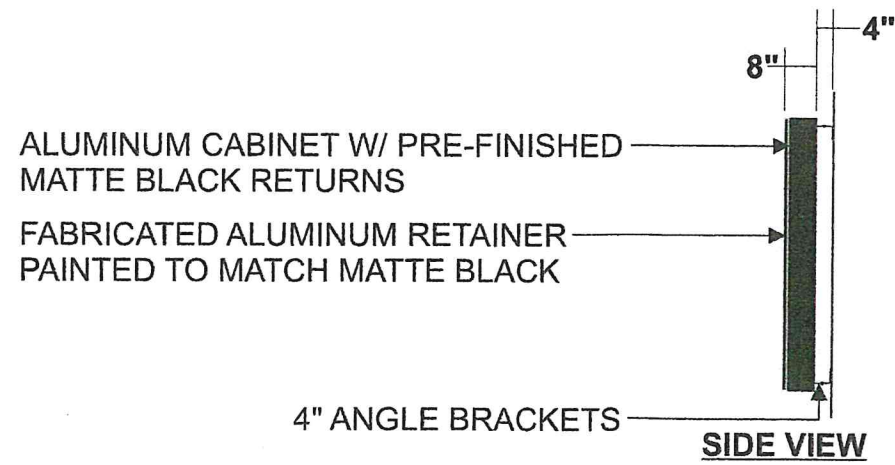
N01 KOH100-CL-S3-LS-60-LTRS-WT
N02 KOH100-CL-SEPH-24-LTRSPLUS-WT

Install (1) new Kohl's + Sephora letterset on existing façade. Kohl's letterset to be installed with 4" angles brackets & + Sephora with 4" aluminum tube spacers. Primary power to be provided by others.

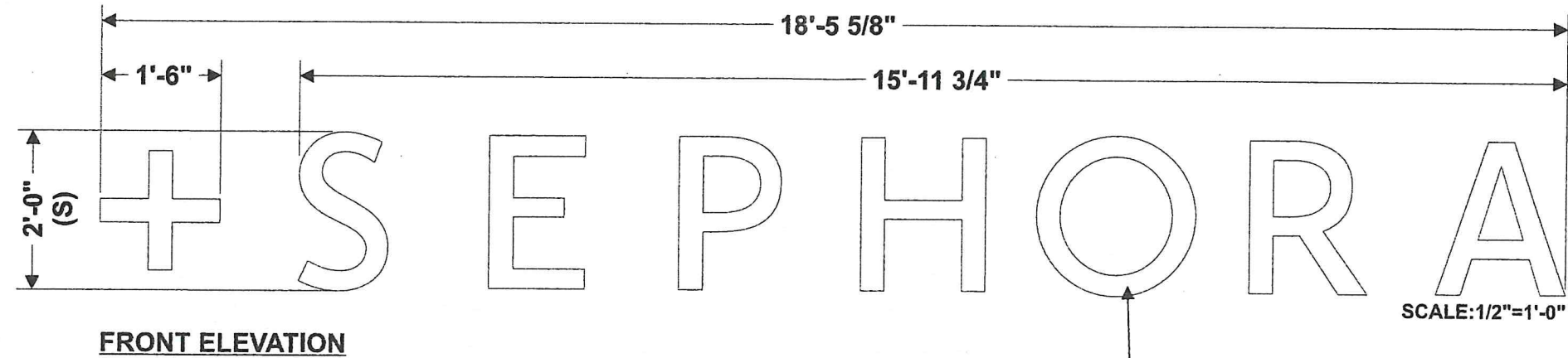
N01 KOH100-CL-S3-LS-60-LTRS-WT



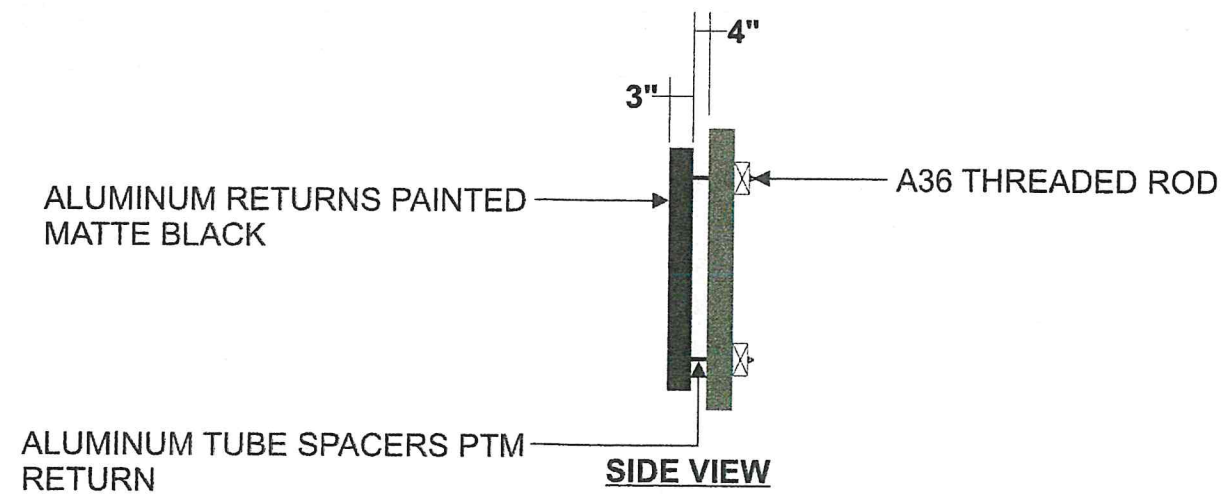
#2447 WHITE ACRYLIC FACE WITH
FABRICATED ALUMINUM RETAINER.



N02 KOH100-CL-SEPH-24-LTRSPLUS-WT



#2447 PLASKOLITE OPTIX TRANSLUCENT WHITE
ACRYLIC FACE - FACES ROUTED FLUSH WITH RETURN.





EXISTING

PROPOSED

Reface existing 1'-9" x 11'-7 3/4" (20.4 sq ft) double-sided tenant panel in existing ground sign.



E02 SEPH-REFACE

Please remove and replace existing Kohl's tenant panel with flex face, with digitally printed vinyl to match SW Caviar and white copy.

Entire face is illuminated, however the background black color will not shine very bright.