



# The Lisbon Quarterly

A Newsletter for Lisbon Residents

## *Town Clerk's Corner*

By Michelle Grant, Town Clerk

### Thank you, everyone

It was great to see the number of citizens who showed up to vote at the recent special town meeting to vote on expenditures for vinyl siding on the Newent Meeting House. Ken Mahler of the Historical Society provided valuable information. Motion passed 75-28.

### Important Reminder

Be aware that the State of Connecticut will require proof of license to kennel your dog. Reminders for past registered dog owners will go out in May and new licenses will be issued the entire month of June. An up to date rabies certificate is required to obtain a license for all dogs 6 months and older. Any new dog owners have 30 days to get a license for their new dog. A Late fee of \$1 per month will be imposed beginning July 1.

### The new 2024 DEEP Regulation Booklets are now available

Lisbon Town Clerk's Office is an approved DEEP Sportsmen License Vendor or you can get your licenses on line @ [CT.aspirafocus.com/internet/sales](https://CT.aspirafocus.com/internet/sales). Residents 65 years of age or older are qualified for basic sportsmen licenses at No Charge! Who says getting old doesn't have its benefits?!

### Election News

Absentee ballots applications may be obtained, in person, from the Town Clerk's Office or on the Town of Lisbon website under the Town Clerk's page. Absentee ballots become available March 12 for **qualified** voters who meet specific criteria.



Lisbon Quarterly Newsletter is published quarterly and is available online at [www.lisbonct.com](http://www.lisbonct.com). Hard copies may be obtained in Lisbon Town Hall.

# Board of Finance

By Wayne Donaldson, Chairman

The contract with the Town Auditor has expired and the Board of Finance is seeking bids from firms for the towns auditing services for the next 3 years. Bid information may be found on the Town Website:

<https://www.lisbonct.com/home/pages/bids-rfps-rfps>

The Board of Finance will hold **Budget Meetings** throughout the months of March and April. This year's budget is expected to have a major impact on the mill rate, with both the Lisbon Emergency Response cost coming back into the budget and the first payments on the firehouse bonding. We encourage residents to attend the meetings and express their opinions and suggestions.

## Board of Finance 2024-25 Budget Meeting Schedule (Revised 1/31/2024)

Meetings will be held at 7:00 PM in the  
Town Hall Meeting Room unless otherwise noted.

March 11, 2024 General Government and Board of Education budgets due to the Board of Finance.

March 13, 2024 (Town Hall) - General Government and Board of Education budget presentation to the Board of Finance. Discussion and possible vote.

March 20, 2024 (Town Hall) - Regular Meeting

March 27, 2024 (Town Hall) - Budget discussion and possible vote.

April 3, 2024 (LCS Cafeteria) - Public Hearing on both budgets.\*

April 10, 2024 (Town Hall) - Discussion and possible vote on both budgets.

April 17, 2024 (Town Hall) - Regular Meeting

May 6, 2024 (LCS Cafeteria) - Annual Town Meeting

Per ordinance it is the first Monday of May

The Capital and Non-Recurring account will be voted on at the meeting.

The General Government and Board of Education Budgets will not be voted on at the meeting except to send the budgets to referendum.

Approximately 1-2 weeks later - Referendum on the General Government and Board of Education Budgets.

Approximately 1-2 weeks later - Mill Rate Set.

All dates are subject to change. Please contact Town Hall (860) 376-3400 or Wayne Donaldson lisbon.bof.chairman@hotmail.com to confirm dates.

\* Budgets will be available in the Town Clerk's office five (5) days prior to the Public Hearing.



### New Fire Station Building Update

By Mark Robinson, Chairman, Fire Station Building Committee

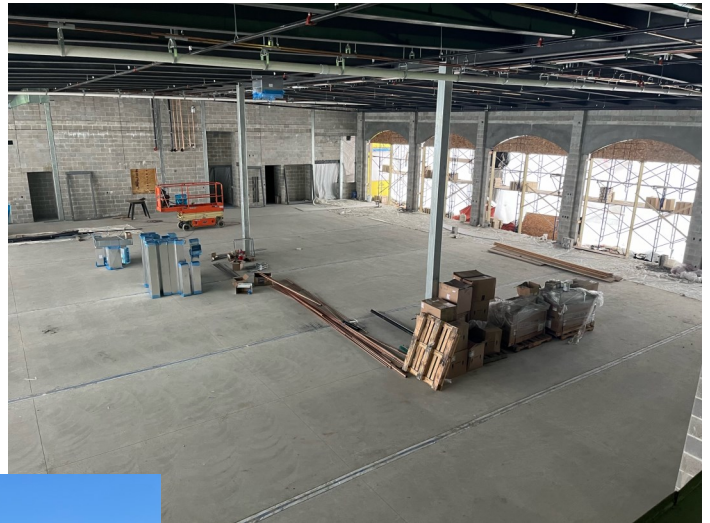
The building progress is moving along on budget and on schedule, with tentative completion in May/June 2024.

You can access the building progress by going to the following links:

[www.lisbonnewfireheadquarterslisbo.godaddysites.com](http://www.lisbonnewfireheadquarterslisbo.godaddysites.com)

[www.lisbonct.com/fire-station-building-committee](http://www.lisbonct.com/fire-station-building-committee)

Agendas and Minutes may be found on the Fire Station Building Committee page on the Town's website.



*Plans are being formalized for a ribbon cutting and open house for the New Lisbon Fire Station and will be announced at a later date.*



## *Registrar of Voters*

### ***Information about the New, Early Voting***

The new “Early Voting” for the 2024 elections was legislatively driven and will be held at the Lisbon Meeting House, 12 South Burnham Highway.

**Early Voting** will start on Tuesday, March 26, 2024 and go thru Thursday, March 28, 2024, as well as Saturday, March 30, 2024. Early Voting hours are 10:00 am until 6:00 pm each day.

**Presidential Preference Primary Election** is being held on Tuesday, April 2, 2024 from 6:00 am to 8:00 pm at your assigned polling places. Polling Place #1 (45th District) is the Lisbon Town Hall, 1 Newent Road and Polling Place #2 (47<sup>th</sup> District) is the Active Aging Center (formerly called the Lisbon Senior Center), 11 Newent Road.

A link to help you find your polling district may be found on the Town website:  
**[www.lisbonct.com/registrar-voters](https://www.lisbonct.com/registrar-voters)**

Please contact the Registrars of Voters if you need additional information.  
**(860) 376-1743**

Stephen Barrett, Registrar of Voters

### **SAINT MARY’S FOOD PANTRY**

Saint Mary’s in Jewett City is the Town’s designated Food Bank.

Food can be picked up at the Rectory every second and fourth Tuesday of the month,  
10am – 11am and 3pm – 4pm.

To donate, please call:

**860-376-2044**

*For important distribution information and calendar, visit the Town’s website: <https://www.lisbonct.com/home/pages/town-services>*

## *Emergency Management*

In the event of a Local, Regional or even a State or Federal emergency, our Director of Emergency Management is available to answer your questions:

**Jonathan Arpin**

Emergency Management Director

**1-(860)-625-0026**

Information is also available on the Town website, under Departments - Emergency Management:  
<https://www.lisbonct.com/emergency-management>





# EASTER EGG HUNT

**SPONSORED BY THE LISBON RECREATION COMMITTEE**

**SATURDAY, MARCH 23, 2024**

**TIME 10:00 AM**

**RAIN DATE: SUNDAY, MARCH 24, 2024 10:00 AM**

**LISBON MEADOWS PARK  
(NEAR THE PAVILION)**

**HUNTING BEGINS PROMPTLY AT 10 AM**

**EGG HUNT DIVISIONS:**

**AGES: 2-4, 5-7, AND 8-10**

**EASTER BUNNY SPECIAL APPEARANCE!!**

**\*PARTICIPANTS ARE ENCOURAGED TO BRING THEIR OWN  
BASKET FOR COLLECTING!**



**JOIN US FOR  
BRUNCH WITH**

*take your pictures, too!*

**THE EASTER  
BUNNY**

**3/23/24 | 10:30AM-12:30PM | LCS CAFETERIA**

General admission (ages 10+) \$15  
Children (3-9) \$5  
2 and Under free

Buy your tickets at:  
<https://lisboncentralschoolpto.weebly.com>  
or contact a PTO board member!



**AFTER THE EGG HUNT**

## *Assessor's Office*

By Rosalyn Dupuis, CCMA I, Assessor

The filing deadlines for various exemptions and classifications are as follows:

### **HOMEOWNERS & TOTALLY DISABLED**

Residents 65 years of age or totally disabled may be eligible for a tax credit on real estate; income guidelines apply and are adjusted each year. Applications are bi-annual, are accepted February 1, 2024 and must be filed on or before May 15, 2024.

### **RENTER'S REBATES**

Residents 65 years of age or totally disabled may be eligible for a rent rebate under CT State law; income guidelines apply and are adjusted each year. Applications will be available April 1, 2024 and must be filed on or before October 1, 2024.

### **PROPERTY TAX EXEMPTIONS FOR BLIND OR TOTALLY DISABLED PERSONS**

Connecticut law provides for a \$3,000 assessment exemption for taxpayers who are legally blind. Proof of the blindness (certification by a qualified medical practitioner) must be received by October 1, 2024.

Connecticut law also provides for a \$1,000 exemption for totally disabled persons who are receiving benefits under a federal, state or local retirement plan, which contains requirements comparable to those of the Social Security Administration. Proof of disability must be received by October 1, 2024.

### **VETERANS**

Veterans may be eligible for an additional exemption if their income is within the approved limits. Applications are accepted February 1, 2024 and must be filed on or before September 30, 2024. This application is filed bi-annually.

### **PUBLIC ACT 490**

All applications for classification of farm or forestland must be received by October 31, 2024.

**Applications and/or additional information for all of the above are available in the Assessor's Office, or online at <https://www.lisbonct.com/assessor>**  
**Please call 860-376-5115 or email [assessor@lisbonct.com](mailto:assessor@lisbonct.com) for more information.**

## Lisbon Historical Society Quarterly Notes

By Kim Sperry



**LISBON**  
HISTORICAL  
SOCIETY  
CONNECTICUT

**Burnham Tavern Update:** Building and Grounds chairman Ken Mahler reports that work continues remaking windows. Quiet Corner Restoration has to custom fit each window frame, sash and mullions. The next major project are clapboards for which we will be writing grants to cover the expense.

Heavy rains recently washed out the farm road to the back fields on the Burnham property. Never has the rain been so great as to make the water impassable under the road's years old drainage pipe. When the weather improves Kevin Shafer & Ken Mahler will use their equipment to install a larger, donated pipe, and resurface the road with recently donated earth products.

**John Bishop House Update:** Chimney and fireplace cleaning and repairs are expected to take place within the month. We anticipate finally getting back to open hearth cooking demonstrations this spring and summer.

**Anshei Israel Synagogue Update:** The synagogue, no longer a house of worship, is a museum opened by appointment. Email Paula Adams at padams60@sbcglobal.net for information. Additionally, A Refuge in the Country, a booklet on the history of the synagogue is available upon request and at the Lisbon Town Hall, just outside the Selectman's office.

**Newent Meeting House Update:** The Town House was recently buffed up by having the walls and woodwork freshly painted with a modern, neutral color scheme and the floors refinished, all in an effort to make the space more marketable. Although the kitchen is not a commercial kitchen, the Historical Society met with the Uncas Health District to solicit advice and address any concerns regarding its future use. We have acquired a three-bay stainless sink to replace the existing porcelain, we also plan to install a small handwash sink and replace 1930s cabinetry. The Historical Society received a donation of two beautiful lamps from the New London Customs House Museum and several exhibit cases. The lights will be installed on either side of the Meeting House double doors.

Building and Grounds chairman Ken Mahler met with the Meeting House carpenter and a steeplejack to inspect a leak at the trim around the steeple where it joins the roof. While in the steeple, he photographed the bell, which was forged by McShane Bell Foundry in Baltimore, Maryland in 1875. McShane was established in 1856 and remains America's oldest bell company.

**What is a Steeplejack?** They are skilled tradespeople whose trade has been around since at least the 11th century. The title reflects their work on the spires of ecclesiastical structures and the high towers of commercial buildings. Twenty-first century steeplejacks often work on very tall industrial chimneys, power stations, high rise buildings, and the construction of new structures in addition to maintenance, repair and restoration of existing steeples.

A new sign in the style and colors of the historic marker on the Town Hall lawn, has been ordered to replace the existing sign on the Meeting House front lawn. The new sign will be similar to the John Bishop House and Anshei Israel Synagogue signs.

Recently the **Farmer's Market Committee** asked for and received approval from the Historical Society, and the Board of Selectmen to relocate to the Meeting House Green. The Planning and Zoning Commission will address the request at a future meeting.

*(Continued next page)*

### Lisbon Historical Society Quarterly Notes *(continued from previous page)*

The former congregational church, like the synagogue, is no longer a house of worship and is now leased to the Lisbon Historical Society. A rental agreement for groups to use the Town House for parties, gatherings, or meetings is posted on the town's website, [www.lisbonct.com](http://www.lisbonct.com); go to the Historical Society under the Forms and Documents link for the agreement. Interested parties can reach out to Vicky Lawhead at 860-334-1003 or email [Newentchurch@gmail.com](mailto:Newentchurch@gmail.com) for scheduling and additional information.

We plan to use the Meeting House for lectures, concerts, meetings, and film presentations. A brand new 13-foot electric movie screen and an auditorium video projector were recently donated, and a movie license is being considered. We hope to make this a small cultural center for the community.

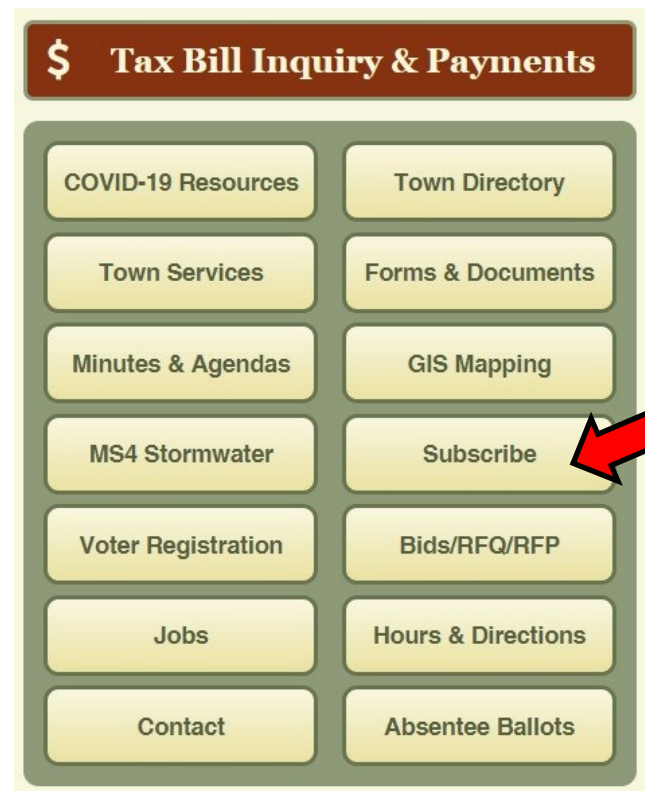
**Cans and Bottles Update:** We are thankful for your donation of these redeemable glass, plastic, and aluminum bottles and cans that are marked CT or CTRV. Your donations support the John Bishop House, Anshei Israel Synagogue, Burham Tavern and Newent Meeting House. Although the State legislature added new products to the redemption stream like Gatorade and tea beverages, there are still a few exceptions. Wine bottles, plastic milk jugs, plastic food packing, High Noon, Fishers Island and nips are not redeemable and should be recycled in blue bins on recycle day. Additionally, it is impossible for the bar code readers at the redemption centers to process crushed aluminum cans and plastic bottles.

## Website Pointers

### "Subscribing" to Agendas, Announcements, and Urgent Alerts

Did you know that you can **Subscribe** to and receive email notices of **Agendas, News and Announcements** and/or **Urgent Alerts** from the Town Departments and Boards, Commissions or Committees you are interested in? You may subscribe to one, a few, or all!

To "subscribe", go to the Town's website [www.lisbonct.com](http://www.lisbonct.com). On the Home page, look for the "Subscribe" button (see illustration at right). Once there, put in your email address and confirm; then check off all you would like to receive. Once checked off, check the "I'm not a robot" box, then click on "Subscribe Me". It is an easy way to receive information about Town activities, meetings, and emergency notifications.





# Senior Center / Active Aging Center

By Ara Wilnas Senior Center Coordinator



**We are excited to announce our transition from Lisbon Senior Center to our new name:**

## **Active Aging Center!**

We will still be the same welcoming setting for socialization, activities, trips, classes, and maintaining the health, independence, and wellbeing of active agers.

We can still be reached if you have any questions at 860-376-2329, [awilnas@lisbonct.com](mailto:awilnas@lisbonct.com), or through our official FaceBook page: <https://www.facebook.com/lisbonseniorcenter>. Come check out our new sign and all of the wonderful activities going on at the center this spring!

### WEEKLY ACTIVITIES:

11:30 Daily Lunch

Lunch Special every Thursday

### MONDAYS (Sign up day for paid trips/events)

- 12:00 Chair Yoga
- 1:00 Senior Fitness

### TUESDAYS

- 9:30 Quilting
- 10:30 Rummikub & Other games
- 12:00 Pitch
- 12:00 Knitting/Crochet Club

### WEDNESDAYS (Sign up day for paid trips/events)

- 9:30 Caning, Carving & Basket Making
- 10:00 Pool

### THURSDAYS

- 12:00 Bingo-sales from 10:30-11:30

## *Senior Center / Active Aging Center*

*Continued*

### **March**

- Thursday March 7<sup>th</sup> Uncas Health Blood Pressure Monitoring
- Friday March 8<sup>th</sup> Art Class
- Wednesday March 10<sup>th</sup> Public Shooting Stars Meeting
- Monday March 11<sup>th</sup> March Birthday Celebration with cake
- Tuesday March 12<sup>th</sup> Trip to NFA's Brickview Restaurant
- Friday March 15<sup>th</sup> Movie/TV Matinee (Downton Abbey)
- Wednesday March 20<sup>th</sup> St. Patrick's Day Corned Beef Luncheon
- Tuesday March 26<sup>th</sup> Love on a Plate Lunch Special (Baked Potato Bar)
- Wednesday March 27<sup>th</sup> Trip to Gus' Pub
- Friday March 29<sup>th</sup> Closed for Good Friday

### **April**

- Thursday April 4<sup>th</sup> Uncas Health Blood Pressure Monitoring
- Wednesday April 10<sup>th</sup> Public Shooting Stars Meeting
- Friday April 19<sup>th</sup> Quarterly Veteran's Breakfast (FREE for all Veterans)
- Friday April 26<sup>th</sup> AARP Safe Driving Class

### **May**

- Thursday May 2<sup>nd</sup> Uncas Health Blood Pressure Monitoring
- Wednesday May 8<sup>th</sup> Public Shooting Stars Meeting
- Monday May 27<sup>th</sup> Closed for Memorial Day
- Tuesday May 28<sup>th</sup> Red Cross & Lion's Club Blood Drive

We are working on many more trips, activities, classes, and events for April and May. Call the Active Aging Center at 860-376-2329 to sign up for the monthly newsletter so you can receive an up-to-date calendar of all the exciting offerings each month. Do you have an idea for what you would like to see happen at the center? Come share your ideas at the monthly Shooting Stars meeting!

# From The History Books

## A HISTORY OF TOWN GREENS

*By Marcia Shafer, Lisbon Town Historian*

Town Greens are an area set aside in almost every town in Connecticut and New England when they were setting up their settlements, towns, or villages. They reserved the best land for planting their crops and for their animals to graze. Then they plotted land close by to build their homes on equal sized plots.

Societies reserved a common area central to most of its residents for public use and to erect a meeting-house for town business and worship. The minister of the meetinghouse acted in the political interest of the town during the 18th and early 19th centuries. The green was used for military training, grazing livestock and cemetery plots. Stockades were often set up in these areas as a form of punishment. Some town greens were used as a dumping ground for discarded items.

During the Revolutionary War and after, some town greens were used for target practice and military drills. As time passed, the town greens became a meeting area for people to relax, have picnics, and market home grown products. After the Civil War, town greens became more essential to most communities. They were used as a respite from the hustle and bustle of crowded city life, beautifying the town center.

Lebanon Green has a large town green which at one time was 400 feet wide and 2 miles long. Today it is 1 mile long and has many historic homes and businesses surrounding it. It has sidewalks around the perimeter for walkers and visitors, and parking for events held on the green. Their green has a modern building with their history and genealogy research to document the people who lived there in the past. It was noted that the French Calvary camped there on the green for 8 months over the winter and spring as its base camp and winter quarters during the Revolutionary War. There also is the War Office where Governor Jonathan Trumbull kept office to mobilize soldiers with provisions and soldiers for the War. The Lebanon Town Green has 3 churches, a town hall, a library, and the Historical Society.

The New Haven Green was designed in 1641 as a square grid. The center square was kept as an English custom and the 8 other squares surrounding the green were used for businesses, churches, homes, jails or stockades, schools, and burying grounds. It was used for market places, trade centers, burial grounds and musters for troops or soldiers.

The Lisbon Town Green is the site of the Newent Congregational Church (now Newent Meeting House). The present church was built in 1858 and is a replica of the Town's second church. Some of the current structure was built using wood from the second church. The grounds near the church were used as a place for fundraisers. The schoolhouse was built to the left side of the church but was destroyed by lightening in 1928. The house known as the parsonage across from the current Town Hall, was built by David Hale in the mid 1790's, and was purchased by the church for its ministers.



## *Slater Library News*

### **Open House Art Show – Saturday, April 6<sup>th</sup>, 2-5pm**

Local Artists display their work. Artists will be on hand to answer questions and discuss what motivates and inspires them. Light refreshments will be served by Friends of Slater Library.

### **Tick Talk - Tuesday, April 9<sup>th</sup>, 6pm**

David Murray presents this program on how to combat ticks in your yard, and protect yourself as you enjoy the great outdoors. This program will also give in-site on tick borne illnesses. An Adult/Teen event.

### **“Out of the Basement”/ Mental Health and Child Sexual Abuse Awareness – Tuesday, April 16<sup>th</sup>, 5:30pm**

This program is co-hosted by Author James Rourke, Griswold PRIDE and UCFS. James the author of “Out of the Basement,” is a local author and teacher at NFA. An Adult / Teen event.

### **Friends of Slater Library HUGE Book / Yard Sale – Saturday, April 27<sup>th</sup>, 9-2pm**

Our Friends take over the Griswold Town Hall parking lot for this event. The Seed Library will also be open and we will be having a plant exchange under the tree!

### **The Beatles Now and Then – Tuesday, May 7<sup>th</sup>, 6 – 7:30pm**

It is the 60<sup>th</sup> Anniversary of the Beatles invading America! Join us with author Charles F. Rosenay!!! presents this multimedia program with film and fun facts. We will also welcome a live musician – a Paul McCartney sound-alike! A program not to be missed. An Adult / Teen event.

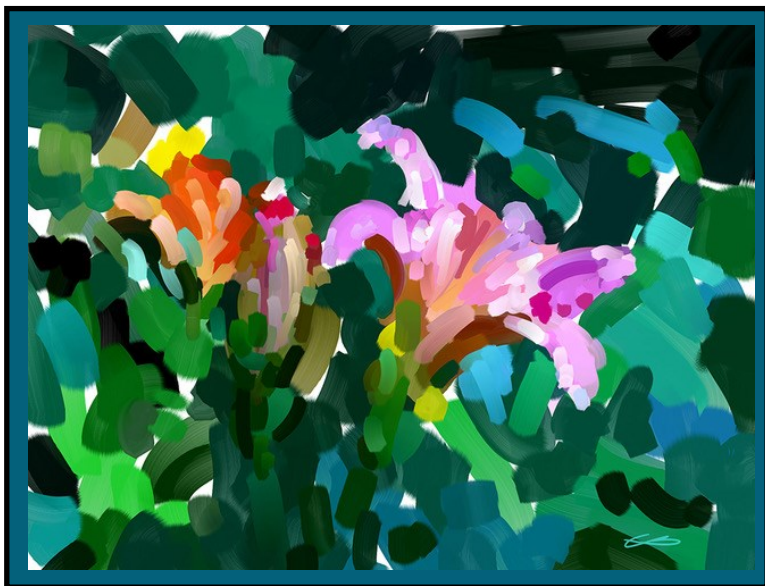
### **“HER MAJESTY” Queen Elizabeth II – Monday, May 20<sup>th</sup>, 6pm**

Sheryl Faye Presents Historical Women. We are pleased to host Sheryl here once again. She has performed other programs here in the past that were so well done that we keep inviting her back! Please join us to welcome Her Majesty, a true icon, inspiring people around the world with her strength and resilience. An Adult / Teen event

### **Under the Tents! Out door kick off for Summer – Friday, June 14<sup>th</sup>, 2-4**

Join us on the front lawn for Upcycle Crafts and the Waterford Country School Petting Zoo. Pick up information about our summer children’s program, visit with the animals and upcycle with us!

**Connecticut Authors Trail – July, Our Date TBA!** The trail kicks off in Franklin July 9<sup>th</sup> with author Tessa Wegert. Author D.M. Foley will be the Author hosted here at Slater Library. Check in with us for the date as this event is still in planning!



*Lisbon artist Cheryl Blanchard uses digital means to create her paintings. She will be present at the Slater Library Open House Art Show on April 6th to exhibit her work and demonstrate the process.*

# Slater Library News

## Spring Children's Programs at Slater Library 2024

**Toddler Story Time** – Spring session begins March 19<sup>th</sup> @ 10:30am. For ages 2 and 3 with siblings welcome. Music, movement, story and craft with Mrs. Brown! Sign-up starting March 4<sup>th</sup>.

**Baby and Me** - Spring session begins March 19<sup>th</sup> @ 9:30am. For newborns to 18 months. Join us for lapsit songs, rhymes, instruments and stories! Sign-up is required as space is limited, starting March 4<sup>th</sup>.

**1000 Books Before Kindergarten** - Who can join: All children from birth to age entering Kindergarten. Time spent reading aloud to your young child is special and is also an essential part of their language development. It's never too early to start! All it takes is a few stories every day to establish key literacy skills. Sign up at Slater Library to receive your starter package.

**Saturday Stories** – drop-in story time on the 2<sup>nd</sup> Saturday of the month @ 10:30 am. Upcoming dates: March 9<sup>th</sup>, April 13<sup>th</sup> and May 11<sup>th</sup>.

## Weekly Programs

**Let's Lego! Drop in and build!** - Mondays 3-5 pm.

**Wee Play!** - Join us Fridays @ 11 am for this weekly playgroup for ages 0 -5.

**Take and Make Crafts** - Stop in and see what we have on offer!

Contact Slater Library **(860) 376-0024** to sign up beginning March 4<sup>th</sup>.



The Lisbon Community Center will Open its doors April 1st for rentals for the 2024 Season. Rental agreement and prices are located on the towns website ( with the departments/boards) . There is a link to forward agreement to L. Dawley

All correspondents for rentals need to be emailed to ldawley33@gmail.com .

The building's roof has been newly shingled and the siding has been repaired on the parking lot side of the building.

We are looking for volunteers that would like to help with the beautification of the hill . Weeding, mulch spreading and if anyone is getting rid of bulbs and small bushes.

This year's road race is being held on September 22,2024 at 10:00. If there are any local businesses that would like to be a sponsor and have their logo on the back of the runners shirt please reach out to Ellen Joly edjoly01@snet.net

## Ethel L. Ducharme Scholarship



For students who graduated from the eighth grade at Lisbon Central School and will pursue undergraduate or graduate studies towards a career in medicine, including but not limited to physician, nurse, therapist or medical researcher.

Established at the Community Foundation of Eastern Connecticut by the Town of Lisbon Board of Education in memory of Ethel Ducharme, a dedicated Lisbon resident.

Visit our website to apply:  
[cfect.org/scholarships](https://cfect.org/scholarships)



**APPLICATION DEADLINE: MAY 1, 2024**

Questions? Contact us at 860.442.3572 or [scholarships@cfect.org](mailto:scholarships@cfect.org).



Community Foundation  
of Eastern Connecticut