

PROPOSED NEW LISBON FIRE STATION



Project Background

Lisbon Fire station was constructed in two parts the original station was built in 1955 and two more apparatus bays were added in 1977, the original station was built to serve a population of fewer than 1700 residents. Although the station has been maintained, it no longer adequately serves the needs of the town as the town's population has increased by over 50% and includes two major shopping complexes.

Since 1955, the Fire department has evolved from being staffed by volunteers to a per-diem staff, and the current station does not have proper accommodations for female firefighters. Our original fire station did not anticipate the addition of supporting Emergency Medical Services (EMS), and represents 72% of the department's total call volume in 2020.

Additionally, the Fire Department continues to supplement its firefighting apparatus, which are generally larger than older apparatus and more numerous than the equipment the existing station was designed to accommodate.

Concept Design Features of the Proposed New Fire Station

The proposed new Lisbon Fire Station contains five double-deep apparatus bays sized to accommodate current and anticipated fire and EMS apparatus. To minimize the need for backing apparatus, the apparatus bays have the capability to drive-through and are equipped with vehicle exhaust recovery systems designed to improve interior air quality.

The proposed new Lisbon Fire Station has been designed to promote firefighter health by providing facilities that allow for fire equipment and personnel to be decontaminated. The proposed mechanical systems are designed to minimize the spread of toxins, from the fire apparatus to the living quarters and public areas of the station, with the use of separate pressurized mechanical zones.

Throughout the country, firefighters are afflicted

with toxins and carcinogens encountered in performing their jobs. State-of-the-art fire station design, which promotes firefighter health, has evolved since building the original station. Rooms for the decontamination of bunker gear, equipment, and personnel are located directly off the apparatus bay.

The design includes a Training Room that will be utilized as an Emergency Operations Center to centralize emergency services during severe weather or other disasters. Individual showers and changing rooms create flexibility in accommodating female firefighters, and two-person emergency standby rooms accommodate firefighters.

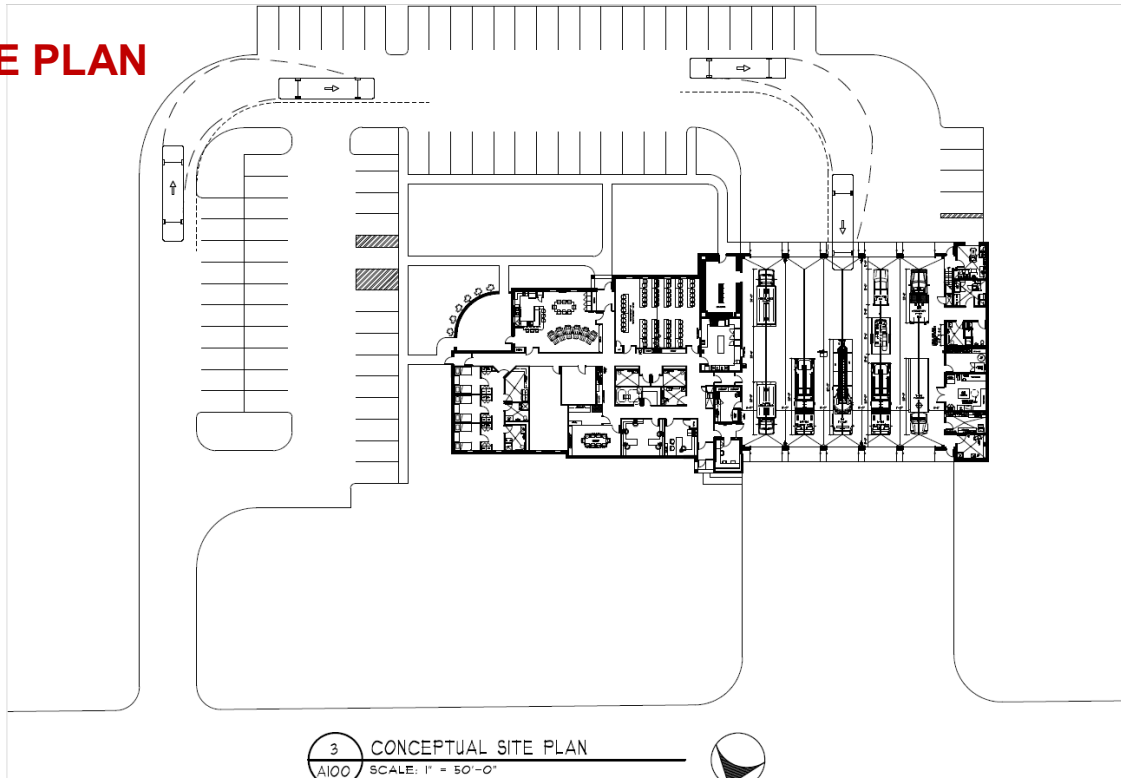
The proposed Lisbon Fire Station Concept Design contains 18,604 gross square feet of space on two floors. A construction cost estimate, prepared by an independent professional cost estimator, indicates a Construction Cost of approximately \$8,000,000 (based on 2021 dollars). Total Project Costs are estimated to be \$13,000,000.

Timeline

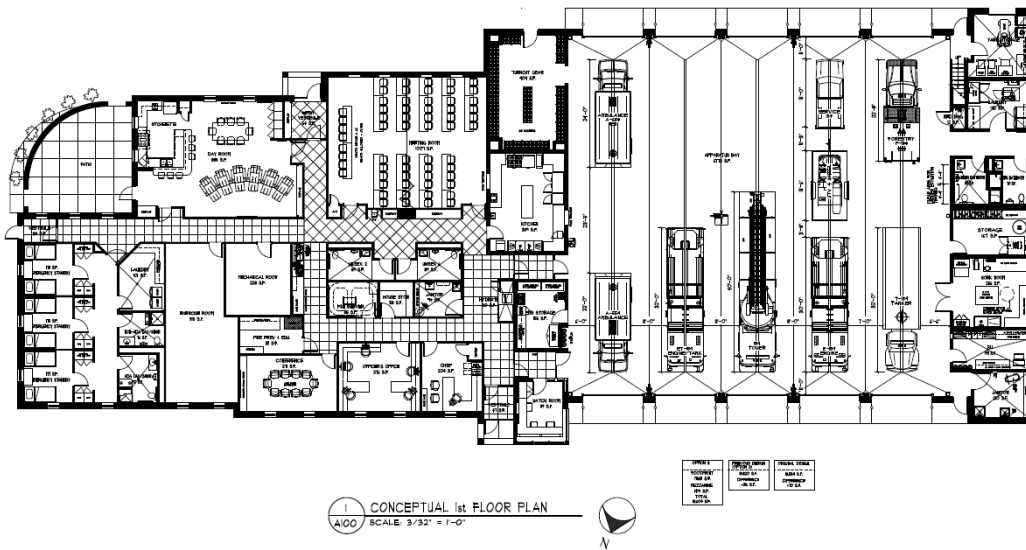
On September 22nd, a referendum vote for funding will be held, which will support all phases of the project bidding through the construction of the new fire station. Final design and bidding will take place beginning in 2021 through early 2022. Construction is then anticipated to start in the Spring of 2022, with an expected completion in the Fall/Winter of 2023.

PROPOSED FIRE STATION PLANS - CONCEPT DESIGN

SITE PLAN



First Floor



Mezzanine

